

Teledyne Odom Hydrographic

聲納E20

可全天候24/7使用的水文測深儀

全新的ECHOTRAC E20是TELEDYNE公司在精準聲納測量市場累積超過40年技術經驗的絕佳產品。便攜、一體式、堅固的測深儀專為在所有環境中進行測量而設計。

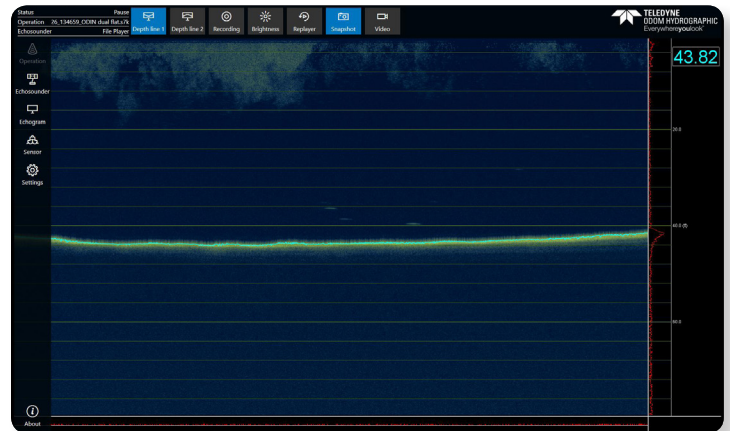
一體式的外觀設計，您可以最大程度地利用設備並降低成本。E20相當容易上手且搬運方便，任何工作無需長時間的前置作業即可快速進行、並提供準確的成果。

ECHOTRAC E20整合了水下測量的所有需求，在日常的工作中開發了全新突破。



E20產品特色

- 1至2個自定通道，頻率範圍：10 - 250kHz
- 可適水深：0.5至6,000m
- 堅實、防震、防水防塵：IP67



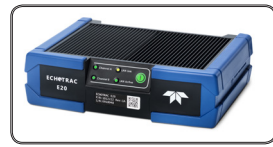
全新的ECHOTRAC SBES 使用者界面

- 精確可靠的調查數據，縮短數據處理時間，使您可以更快地完成項目。
- 從10 kHz到250 kHz、淺至深海的雙通道測量迴聲 – 為您的所有測量項目提供了靈活性，最大程度地降低作業成本。
- 整合式外觀減少了外接端口數量，讓工作量減少並提升效率。

- 直觀的用戶界面，簡潔易懂，讓您可同時完成多項作業。
- ECHOTRAC E20可兼容多種感測器及不同連接埠。



ECHOTRAC E20



產品規格

| | 單頻道 | 雙頻道 | 雙頻道延伸範圍 |
|-------------------|--|-----|--|
| 工作頻段 | HF channel 10 to 250Khz, optimized for 50-250kHz LF channel 10 to 250khz, optimized for 10-50kHz | | |
| 頻道 | 單頻 ¹ | 雙頻 | 雙頻 |
| 精度及解析度 | 200kHz 解析度: 1cm 精度: 2cm +/- 0.1% 33kHz 解析度: 5cm 精度: 10cm +/- 0.1% 12kHz 解析度: 15cm 精度: 15cm +/- 0.1% | | |
| 水深範圍 ² | 200kHz 0.5 - 250m 33kHz 1.0 - 1,000m 12kHz 3.0 - 1,000m | | 0.5 - 400m 1.0 - 3,000m 3.0 - 6,000m |
| 最大ping率 | 50Hz | | |
| 脈衝類型 | CW | CW | CW and FM (chirp) |
| 輸出功率 | Typically max output power varies between 1 and 3kW, depending on transducer | | |
| 電源供應 | 10-30VDC, 100-230VAC ³ , max 100W | | |
| 資料傳輸 | Via LAN interface: For each channel the measured depth and full amplitude-time echogram, passed through auxiliary sensor data, s7k data protocol. Via serial port: For each channel the measured depth | | |
| 感測器傳輸方式 | Impedance: minimum 50 Ohm, Max power: 15W per channel RMS • Single-connector TX1 for dual transducer • Two separate connectors TX1 and TX2 for separate transducer cables | | |
| 連接埠 | 3 serial connectors (RS-232): • Input: GPS position and time, heave, motion, heading • Output: depth 1 Ethernet LAN connector 1 sync connector | | |
| 尺寸 H x W x D | 83.0mm x 300.0mm x 221.0mm | | |
| 重量 | 5.7kg (excl. external cables and transducers) | | |
| 環境參數 | Temperature Operation (Storage): -20°C to +55°C (-30°C to +70°C) IP67, Vibration, Drop: Complies with standard EN 60945 §8.7 and §8.6 | | |

¹The E20 SC single channel can utilize both channels, but not at the same time.

²The depth values are based on the performance of TC2122 for 200 and 33kHz, and HM210/12-8/20 for 12kHz. Stated depth ranges may be impacted by environmental conditions, vessel installation, and motion

³External AC power supply is included and intended for dry installation (not IP67 compliant).



Specifications subject to change without notice.
© 2019 Teledyne Odom Hydrographic. All rights reserved.